



# STM Presentation

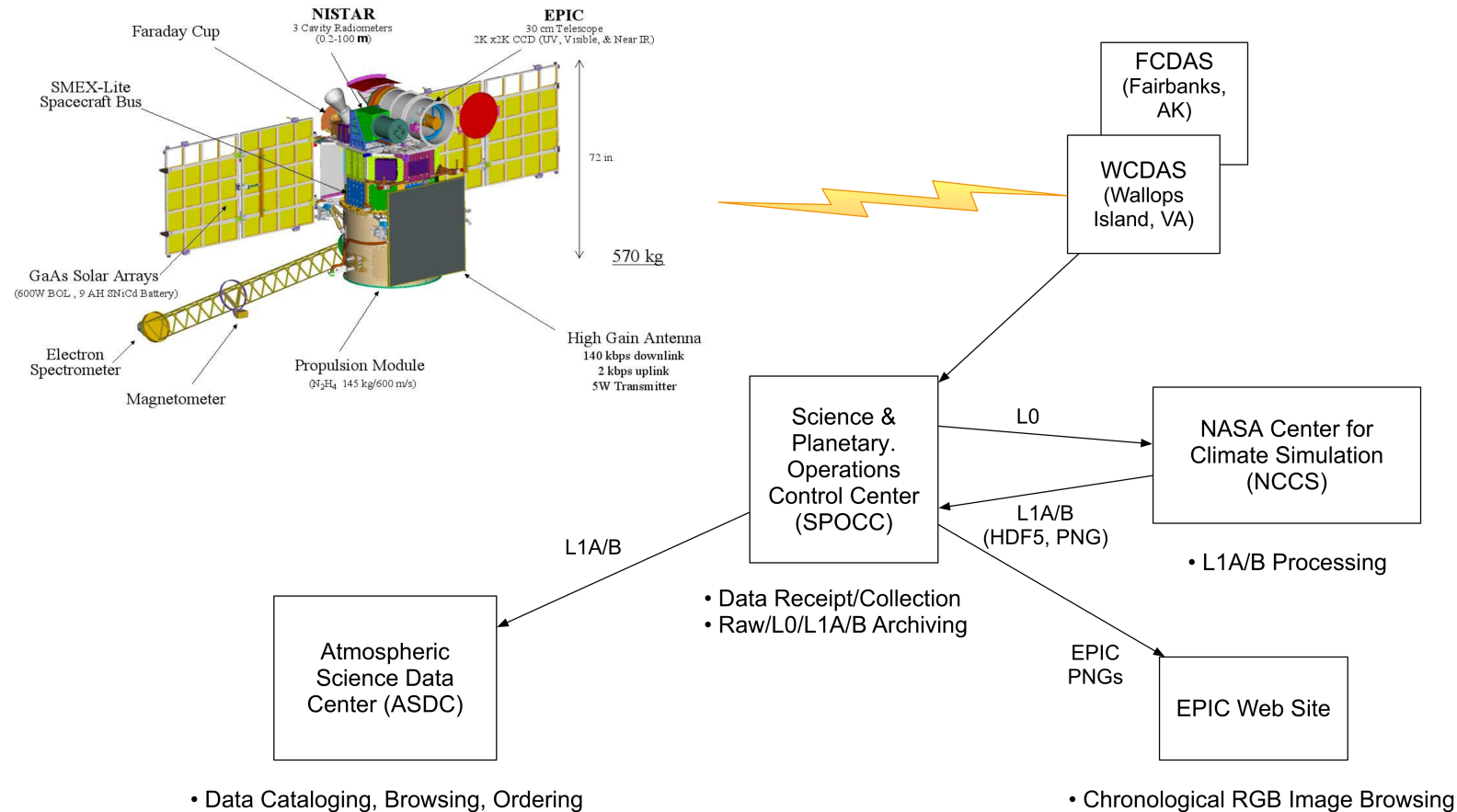
Marshall Sutton, DSOC Manager, Level 2 Processing

October 16, 2023

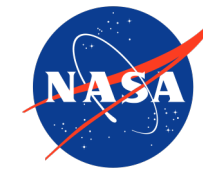
Goddard Space Flight Center, Code 586



# DSOC Functional Overview



<https://eosweb.larc.nasa.gov/project/DSCOVR>



# EPIC 1a and EPIC 1b

EPIC L1A Data (Calibrated, corrected, geolocated):

[https://eosweb.larc.nasa.gov/project/DSCOVR/DSCOVR\\_EPIC\\_L1A\\_3](https://eosweb.larc.nasa.gov/project/DSCOVR/DSCOVR_EPIC_L1A_3)

EPIC L1B Data (georegistered):

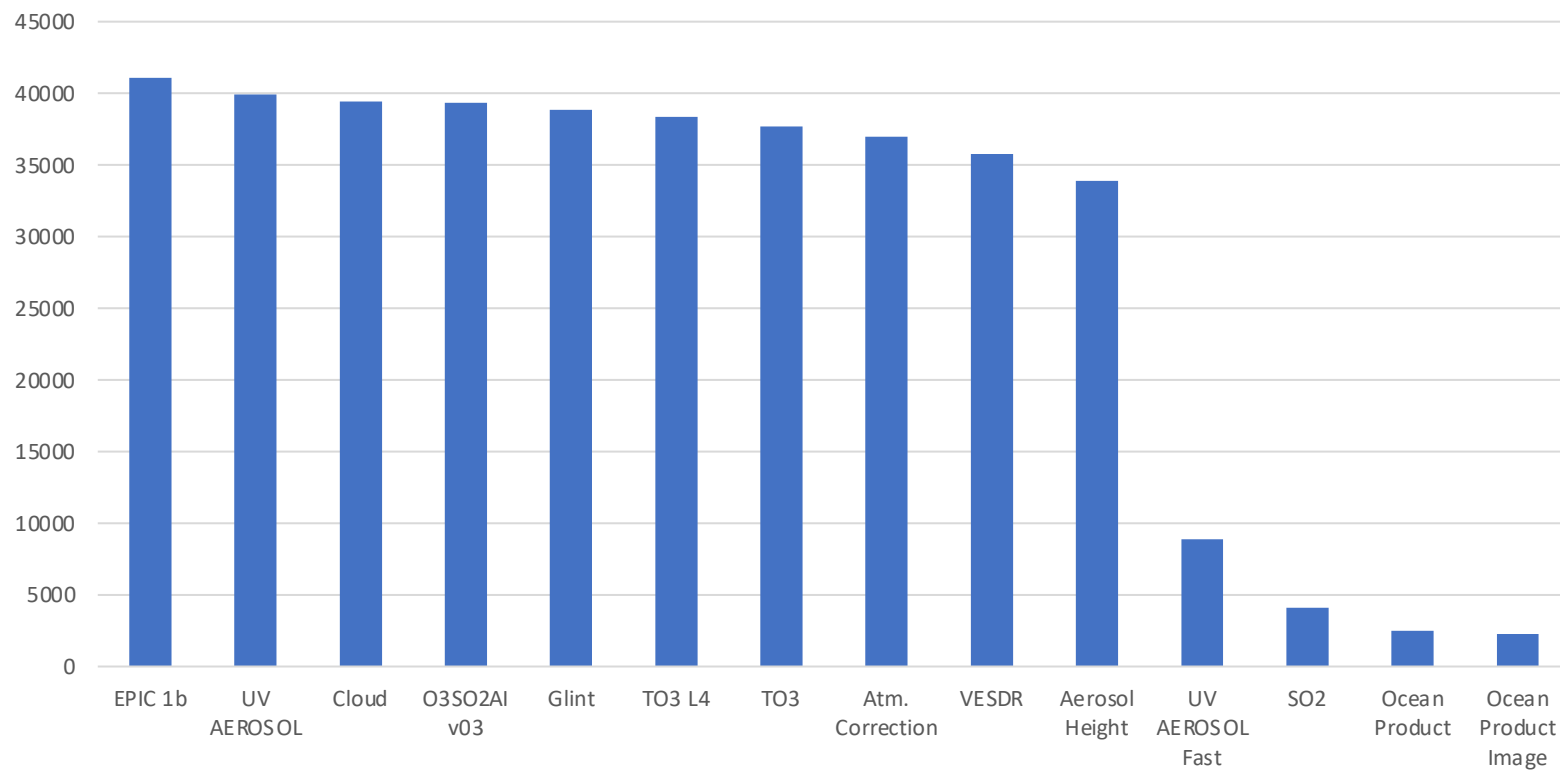
[https://eosweb.larc.nasa.gov/project/DSCOVR/DSCOVR\\_EPIC\\_L1B\\_3](https://eosweb.larc.nasa.gov/project/DSCOVR/DSCOVR_EPIC_L1B_3)

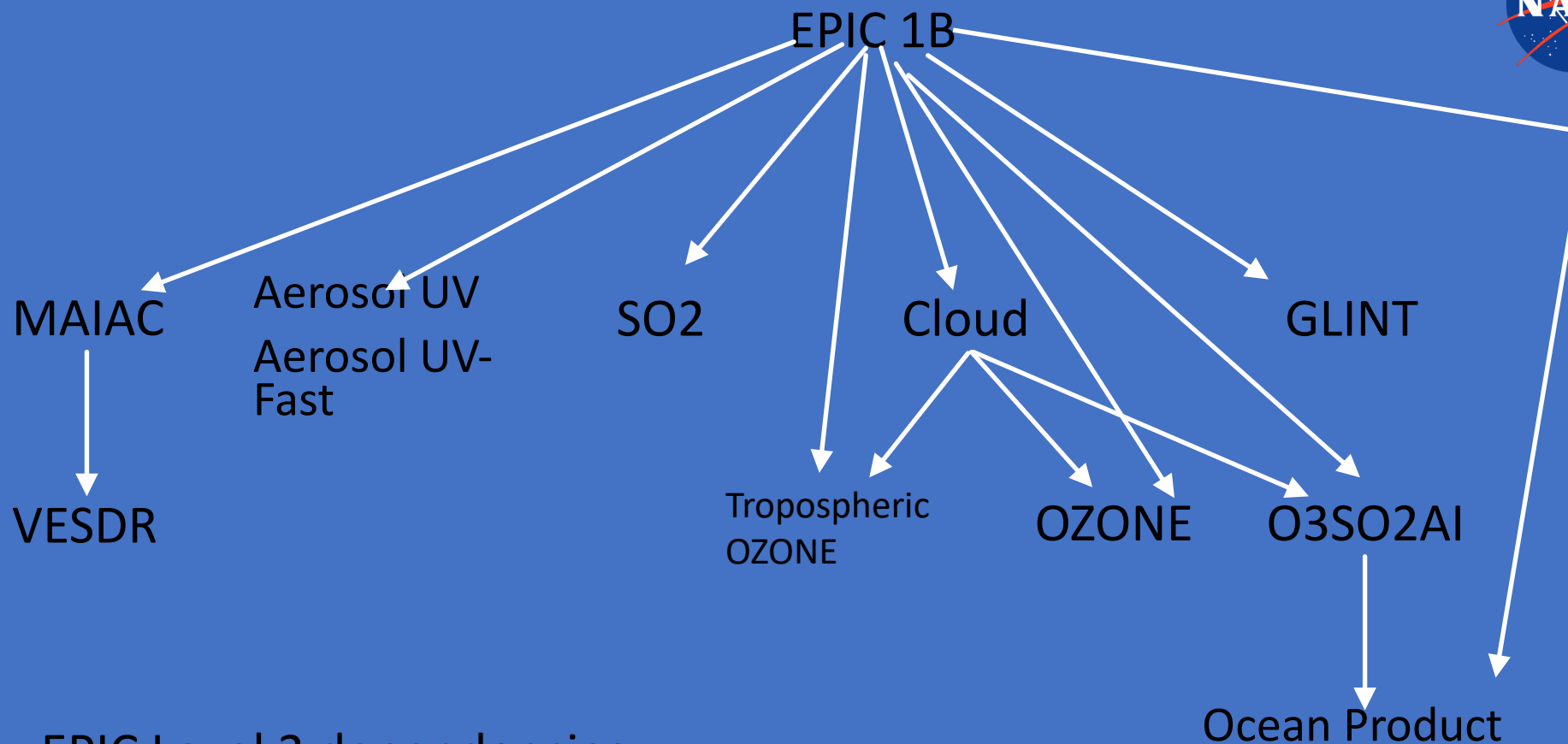
Current version: 3. Version 4?



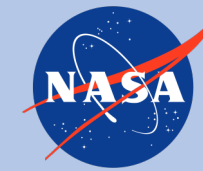
# Level 2 Total Granules Processed

Level 2 Granules

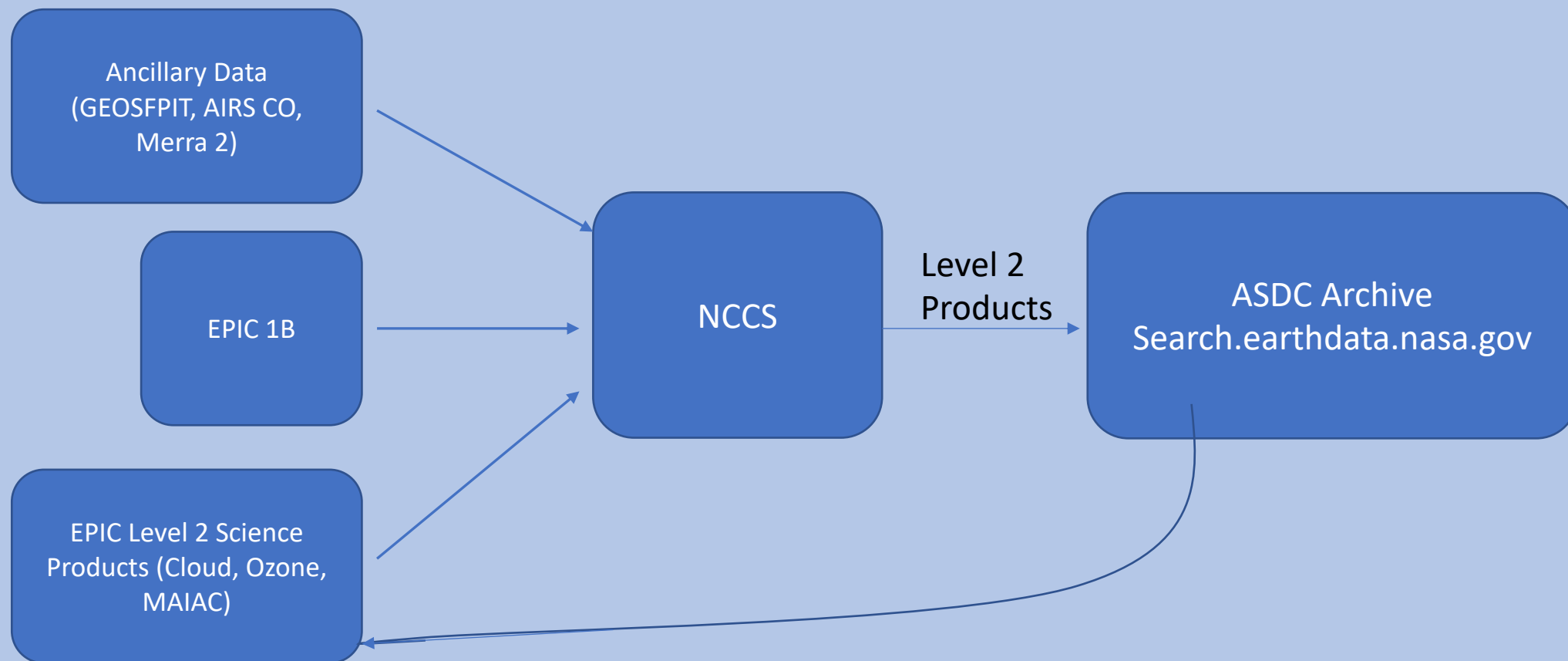




EPIC Level 2 dependencies  
Future work: Incorporate dependencies into pipeline.



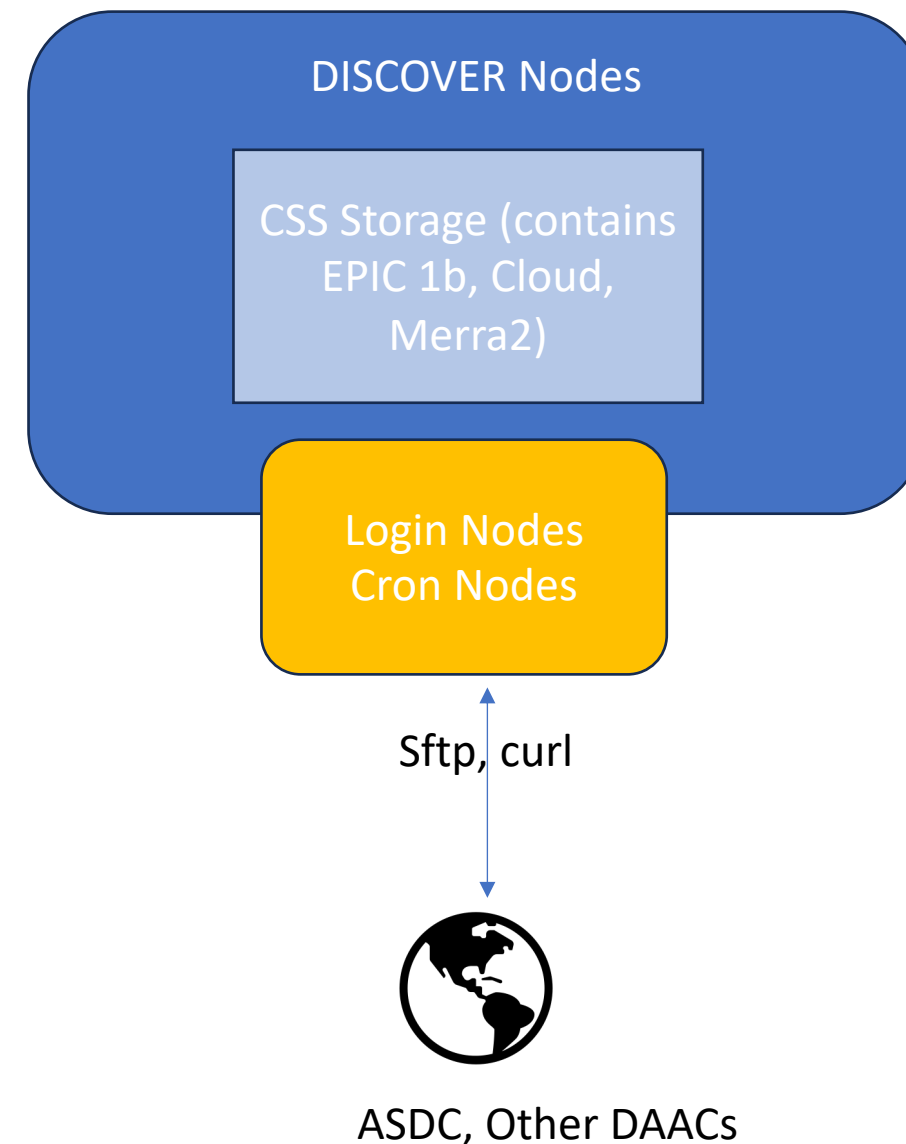
# EPIC Level 2 Pipeline





# NCCS updates and future

- SCU 16 – Intel Cascade lake processors
- SCU 17/18 – AMD Cores, replacing Haswell nodes
- SCU 18 will be the last unit of Discover, will exist for 4-5 more years.
- NCCS plans to move to the cloud
- <https://www.nccs.nasa.gov/sites/default/files/UserForum2023new.pdf>



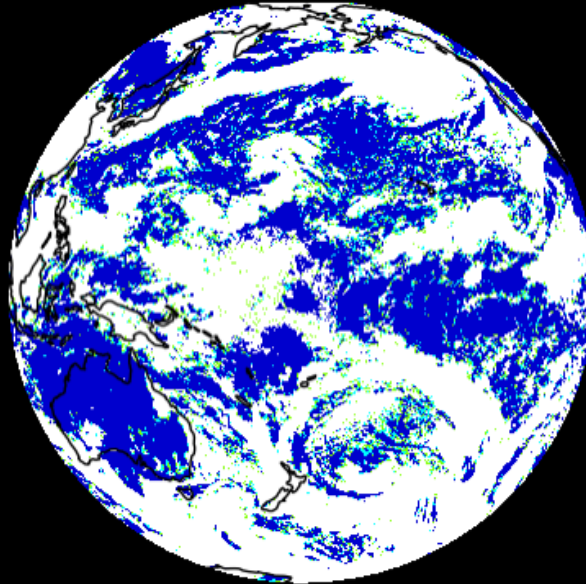


CLOUD\_03\_20230923004555\_03

Website -  
<https://epic.gsfc.nasa.gov>

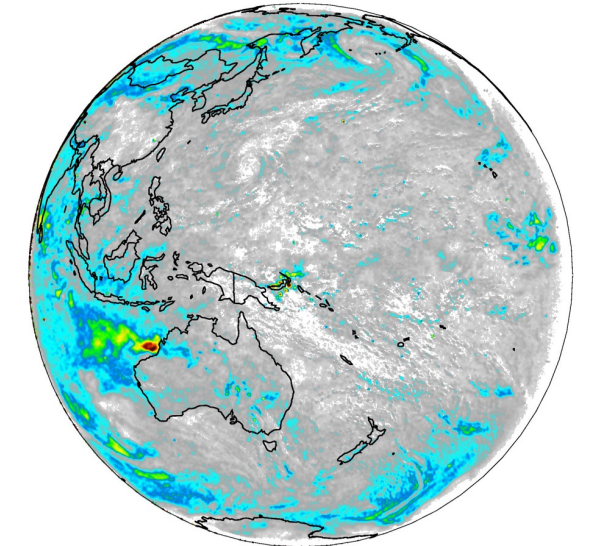
- Daily Product Images
- Look for new images on ASDC.

- Upcoming images:
  - Aerosol Height
  - Leaf Area Index
  - Cloud Height
  - Visible Aerosol

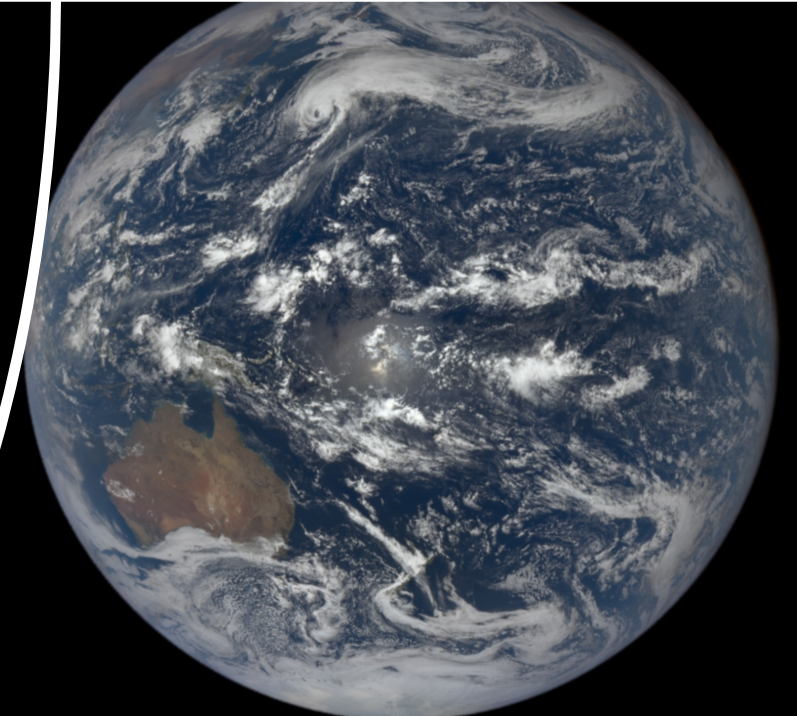


■ High Confidence Clear (35%) ■ Low Confidence Cloudy (4%)  
■ Low Confidence Clear (5%) ■ High Confidence Cloudy (56%)

20231012015633



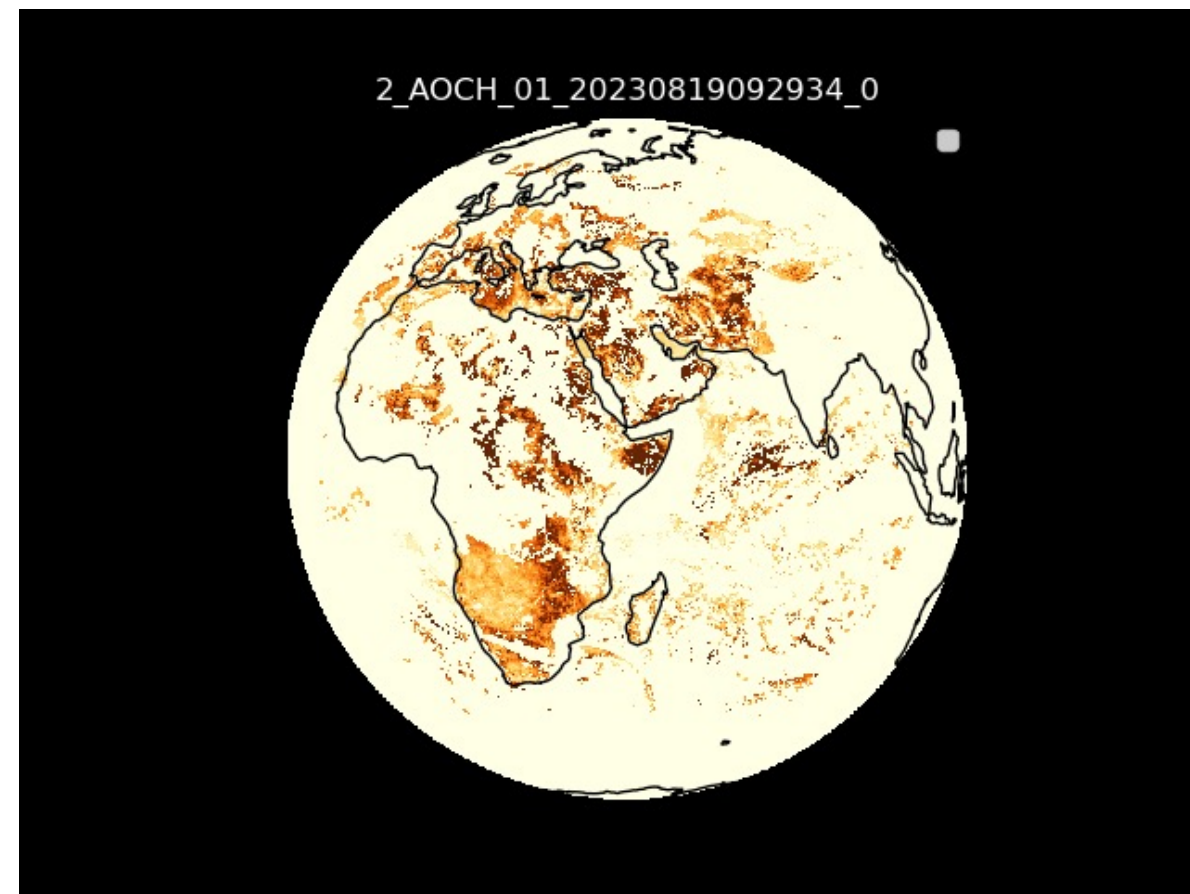
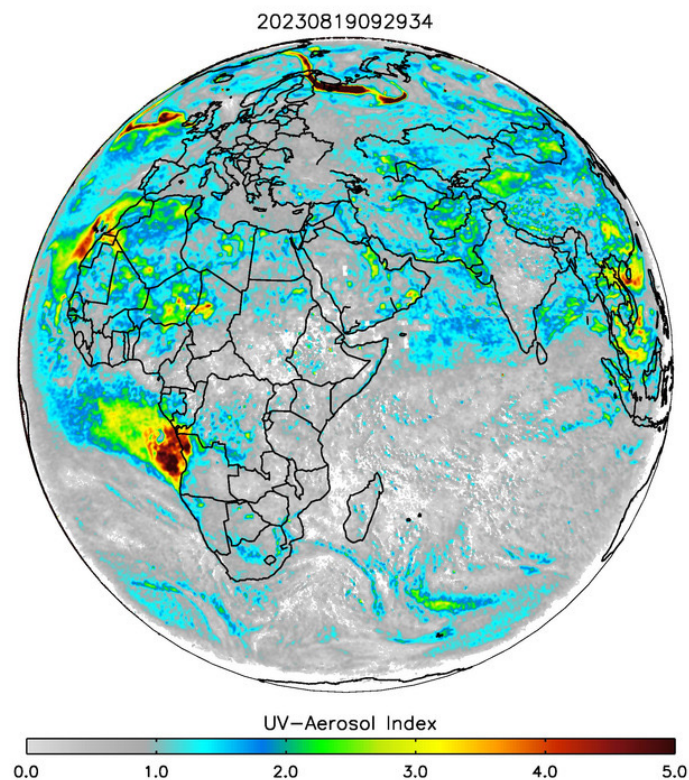
UV-Aerosol Index  
0.0 1.0 2.0 3.0 4.0 5.0







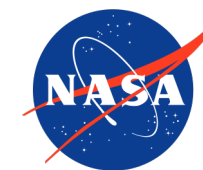
# Aerosol Index vs. Aerosol Height





# DSOC NISTAR Processing

- New batch (through the end of August) will be finished soon.
- NISTAR L1A Data - [https://eosweb.larc.nasa.gov/project/DSCOVR/DSCOVR\\_NISTAR\\_L1A\\_3](https://eosweb.larc.nasa.gov/project/DSCOVR/DSCOVR_NISTAR_L1A_3)
- NISTAR L1B Data - [https://eosweb.larc.nasa.gov/project/DSCOVR/DSCOVR\\_NISTAR\\_L1B\\_3](https://eosweb.larc.nasa.gov/project/DSCOVR/DSCOVR_NISTAR_L1B_3)
- NISTAR L1B Filtered -  
[https://eosweb.larc.nasa.gov/project/DSCOVR/DSCOVR\\_NISTAR\\_L1B\\_FILTERED\\_3](https://eosweb.larc.nasa.gov/project/DSCOVR/DSCOVR_NISTAR_L1B_FILTERED_3)



Questions?